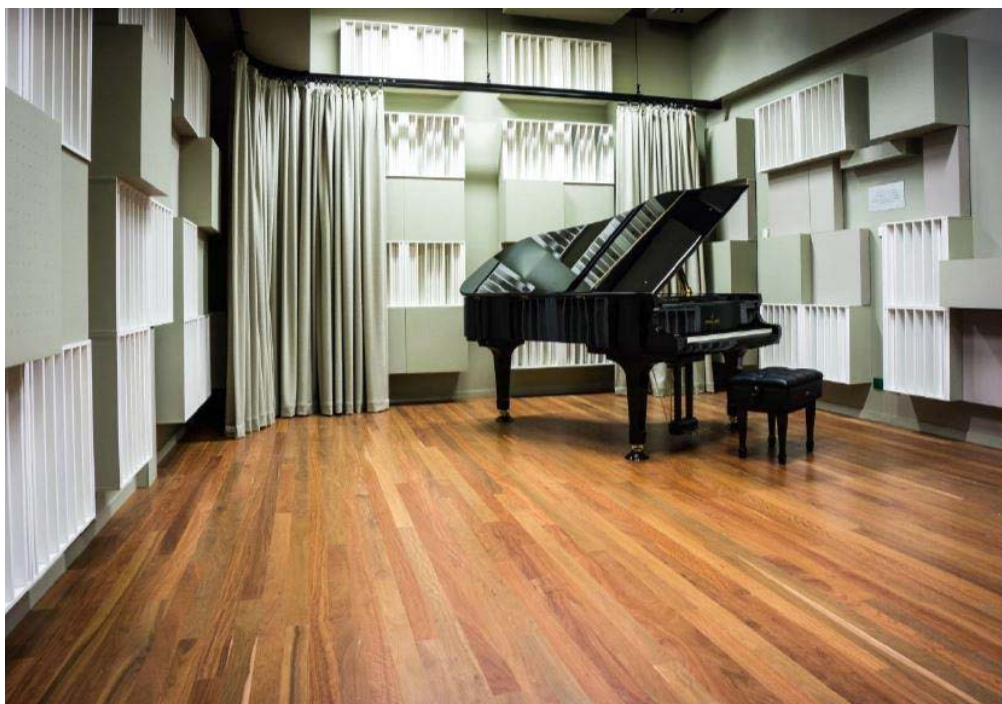


CLASSICAL AND JAZZ MUSIC RECORDING/REHEARSAL STUDIO HIRE



Information and specifications subject to change without notice.

[Link to Online Booking Enquiry Form](#)



Table of Contents

1.0 ABOUT FINE MUSIC 102.5	2
2.0 SERVICES AVAILABLE	2
2.1 Seating Capacity	2
2.2 Access.....	2
2.3 Smoke Free Venue	3
2.4 Liquor	3
2.5 Catering.....	3
3.0 BOOKING THE STUDIO	3
3.1 Hire Rates.....	3
3.2 How to Book.....	3
3.3 Contracts.....	3
3.4 Crew	3
4.0 FINDING US	4
4.1 Street and Postal Address.....	4
4.2 IT sites	4
5.0 TECHNICAL – GENERAL, RECORDING, BROADCASTING & AUDIOVISUAL.....	4
5.1 Loading Access & Parking.....	4
5.2 Communications	4
5.3 Musicians Equipment.....	4
5.4 Piano	4
5.5 Recording Equipment.....	5
5.6 Speaker system	5
5.7 AudioVisual Equipment.....	5
5.8 Other Equipment	5
6.0 TECHNICAL – STAGE INFORMATION & EQUIPMENT	5
6.1 Studio Information.....	5
6.2 Air Conditioning	6
6.3 Lighting Grid/Performance lighting	6
6.4 Cloths	6
6.5 High Access	6
7.0 TECHNICAL PLANS/DRAWINGS.....	7
7.1 Studio floor plan.....	7
8.0 HIRE RATES.....	7

1.0 ABOUT FINE MUSIC 102.5

Fine Music 102.5 is Australia's first stereo FM radio station. On air for forty years, the station is an independent, not-for-profit organisation. Twenty-four hours a day, seven days a week, we broadcast a wide range of classical, jazz, folk and specialist genres across the Sydney metropolitan and Greater Sydney areas from the Blue Mountains to Newcastle. Australia's most talented established and emerging composers and performers are featured in our broadcasts and we regularly record live performances around Sydney featuring leading ensembles and musicians. In nurturing tomorrow's talent, the station runs prestigious youth competitions including the annual Young Virtuoso Award, the Willoughby Symphony Fine Music Young Composer Award (with support from APRA) and the Kruger Scholarship.

Fine Music 102.5 is an integral part of Sydney's cultural landscape promoting and encouraging an active live classical music scene in the community and supporting music education. Our mission is to be Sydney's preferred fine music broadcaster and we record live performances from many of Sydney's leading venues. From our Youth Development programs and internships to our media sponsorships for emerging artists and ensembles, we play an important role in encouraging young musicians and music lovers in their ambitions to be professional musicians or broadcasters. In 2013, we moved into our new studios which incorporate two main broadcasting studios, two production booths for programming and editing and a recording studio – *Studio C*. Whilst Studio C is a source of revenue, we remain keen to support Sydney's music community, and in particular developing artists, through providing access to this exceptional facility. To that aim our fees and charges for use of the recording studio are low for community organisations and individual artists and in return we ask that all care be taken by the hirers of these facilities and equipment. In addition to recordings in Studio C, a small live audience can be accommodated and the space can be used for small presentations and talks.

There is a small green room near the entrance to the Studio which can be used for patrons. It has limited comfortable seating and a small kitchenette with bar fridge so refreshments can be served in this space. Beverages and food are not allowed in the Studio under any circumstances.

2.0 SERVICES AVAILABLE

2.1 Seating Capacity

The seating can be arranged auditorium style for 36 people for a presentation or a solo piano performance. The size of the ensemble of musicians will determine the number of seats available in the space. Seating is provided and the hirer can arrange to suit their needs.

2.2 Access

There is a timber staircase into the studio with 7 treads. There is a lift to the Green Room and Control Room area outside the Studio but no disabled access into the Studio.

2.3 Smoke Free Venue

The entire station and car park is a non-smoking area.

2.4 Liquor

Alcohol can only be consumed in the Green Room area during functions. No alcohol is to be consumed in the Studio, Control Room or Production Booth 2 at any time.

2.5 Catering

A small kitchenette is provided in the Green Room with a bar fridge so refreshments can be provided to patrons. Additional kitchen facilities are located on the ground floor. Outside caterers maybe brought in to cater for specific events. No food is to be consumed in the Studio, Control Room or Production Booth 2 at any time.

3.0 BOOKING THE STUDIO

3.1 Hire Rates

Our rates to hire the venue include all charges for power, normal cleaning and staff to open and secure the premises. Arrangements can be made for rehearsals, sound tests, bump in and out of equipment on non – recording days and for the use of Green Room in conjunction with the Studio hire.

3.2 How to Book

Please call the Fine Music Program Coordinator to discuss your requirements. You will also find an online booking enquiry form [HERE](#)

3.3 Contracts

Once you have discussed your requirements and have decided to proceed, Fine Music 102.5 will provide a Hire Agreement and requires a deposit to confirm your booking.

3.4 Crew

Fine Music provides security staff as part of the Hire fee. Recording technicians, audio operators or other technical staff can be arranged and charged to the hirer. Fine Music's piano tuner, has the exclusive contract for tuning the piano and is charged to the hirer at \$220 per tuning. Extra charge for piano tuner being present during a recording if required.

4.0 FINDING US

4.1 Street and Postal Address

72-76 Chandos Street
St Leonards, NSW 2065

4.2 IT sites

Web site address: www.finemusicfm.com
Email address: reception@finemusicfm.com
Facebook: www.facebook.com/finemusicfm

5.0 TECHNICAL – GENERAL, RECORDING, BROADCASTING & AUDIOVISUAL

5.1 Loading Access & Parking

Facilities for unloading instruments or technical equipment are available in either a loading zone directly outside the building in Chandos Street or in the Courier/Visitors parking bay on the Lower Ground floor of the Car Park. The Car Park entry is off Henry Lane behind the building and accessed from Oxley Street. It is a secure car park and entry to the car park will need to be arranged with staff on arrival. The height limit into the car park for vehicles is 2.3m. Entry into Fine Music from the Car Park is either through the lift or the door on the right hand side of the Courier/ Visitor's parking bay. Prior arrangements need to be made to gain access. Provision is only available for one vehicle in the car park. There is meter street parking from 8am to 6pm in Chandos and Oxley Street or a public car park under the shopping centre in Atchison Street for \$20 per day.

5.2 Communications

To be installed

5.3 Musicians Equipment

6 x black music stands (Wegner Classic 50)
Stand desk 51cm x 34cm/ Height adjustable 65 cm to 124cm
6 x musician chairs

5.4 Piano

1 x Kawai Shigeru Concert Series SK 6 (length 212cm)
1 x adjustable padded professional concert bench

5.5 Recording Equipment

Studio

Mics

2 x AKG 414 XLS

2 X Sennheiser 8040 (Cardiod)

1 x Sennheiser 8020 (Omni)

2 x Rhodes NT5

1 x Rhodes Stereo

4 x AKG ½ inch (Omni/Cardiod Capsules)

Fold back Artist Headphone foldback system (up to 7 sets)

24 X Mic lines between Studio and control room

Mic inputs 16 channel Mackie analogue Mixer

8 channel Protools System on PC

Additional production booth suitable for voice or isolated soloist (not as a drum room)

Control Room

Desk 16 channel Audient analogue Mixer

5.6 Speaker system

Tannoy VX Series

Cross over passive operation via internal crossover network

Connectors screw terminal and speakon

Can speaker positions be moved – Yes (in principle)

5.7 AudioVisual Equipment

Camera fitted for viewing from the green room

5.8 Other Equipment

Studio

1 x black lectern with microphone & gooseneck LED light

Green Room

2 x heavy duty trestle tables, 1800mm x 900mm – hirer to provide tablecloths

4 x single arm chairs

1 x low coffee table

1 x sink and work bench

1 x bar fridge

6.0 TECHNICAL – STAGE INFORMATION & EQUIPMENT

6.1 Studio Information

The studio is a flat floor space with a timber floor. The floor area is 46 Metres Squared which includes the area taken by the grand piano and stairs. (NB: It is not possible to remove the grand piano from the studio however it can be repositioned.) There are acoustic panels/boxes and ceiling to floor acoustic drapes which can be closed or open depending on instrumentation, amplification

or acoustic performance. The ceiling height is 3.9 Metres and there is both visual and audio communication with the control booth above the studio. Gaffer tape can be used on the floor but please do not use masking tape anywhere in the studio.

Performance floor width x length	8.3 x 5.5 Metres
Ceiling height	3.9 Metres
Height from floor to lighting bars	3.5 Metres
Size of control room window	2.38 Metres x 1.6 Metres
240v Microphone patch inputs Fold back outlets	

6.2 Air Conditioning

800 litres/second airflow, conditioned and fixed temperature (to suit piano) Also CO2 level controlled

6.3 Lighting Grid/Performance lighting

Working Lights (Fluorescent lamps)

6.4 Cloths

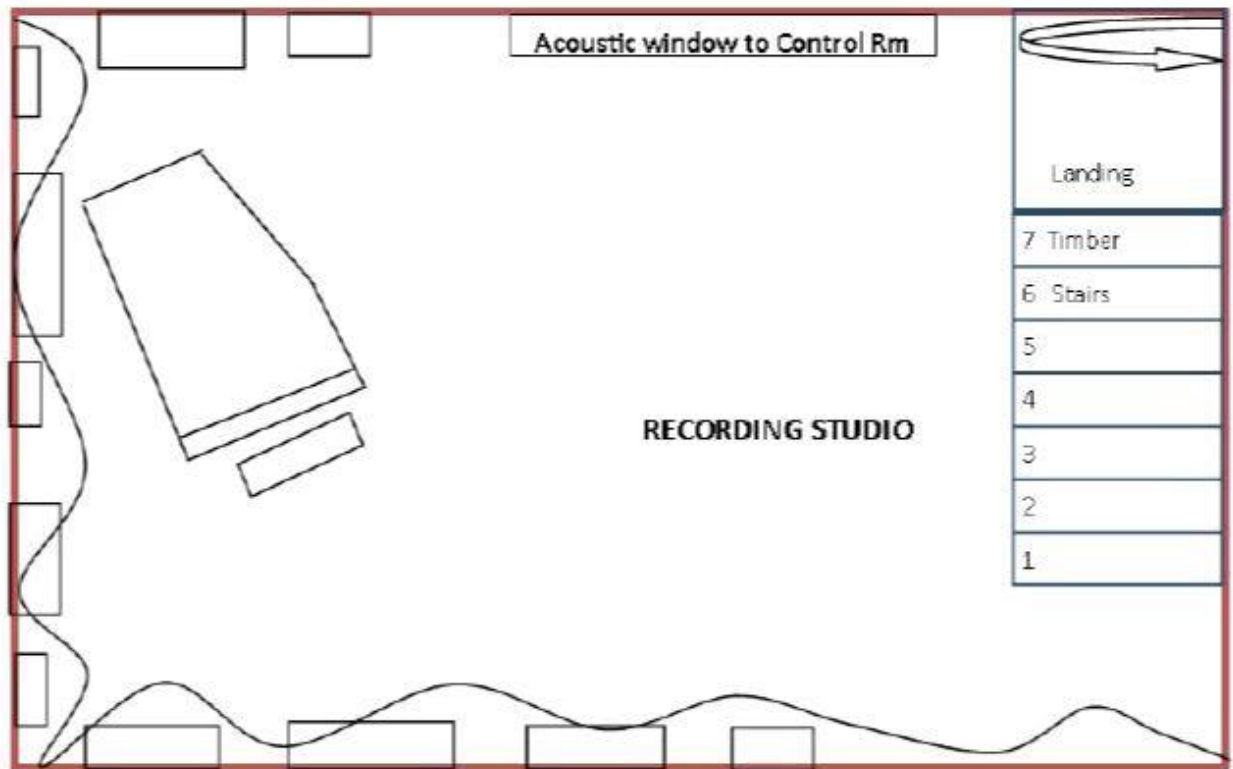
Full Tabs – 4 sectioned x Jands grey wool, L shaped and adjustable (South/East walls)

6.5 High Access

1 x 3.5m A-frame ladder

7.0 TECHNICAL PLANS/DRAWINGS

7.1 Studio floor plan



8.0 HIRE RATES

Studio Hire Rate \$330/hour (GST inclusive)

Recording engineer Hire Rate \$88/hour (GST inclusive)

Facility coordinator rate (for out of hours use) \$55/hour, minimum 3 hours (GST inclusive)

Piano Tuning \$220 (GST inclusive)